

The background of the slide is a grayscale image of a liquid, possibly milk or cream, being poured or stirred, creating a series of concentric, swirling patterns that radiate from the center. A semi-transparent white horizontal band is positioned across the middle of the image, serving as a backdrop for the text.

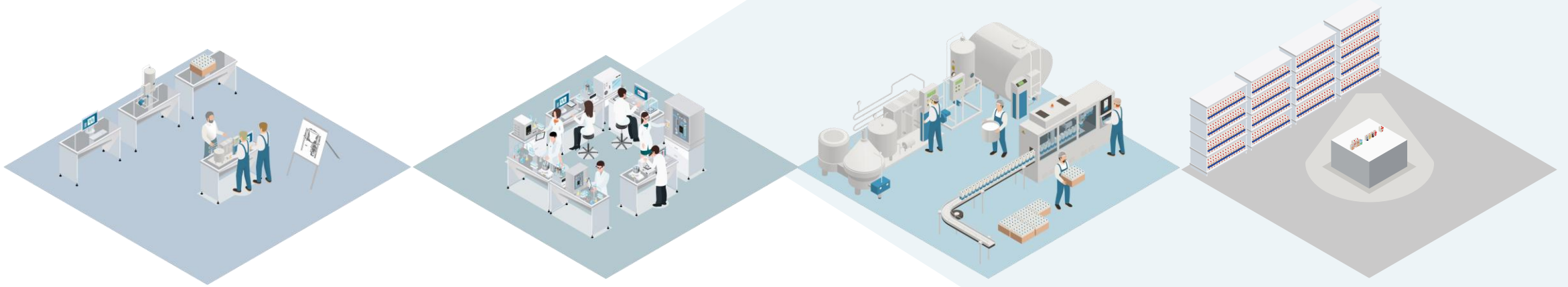
**We are always good!**

Our company mission

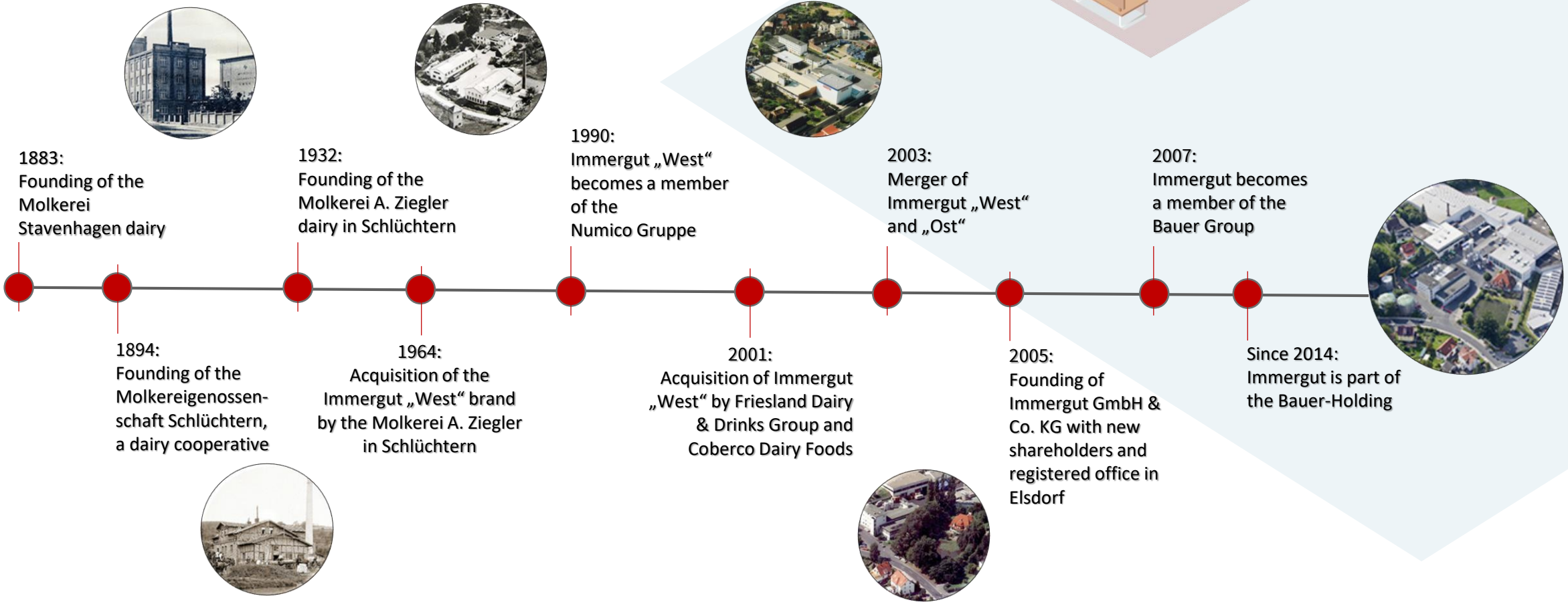


# Our company vision

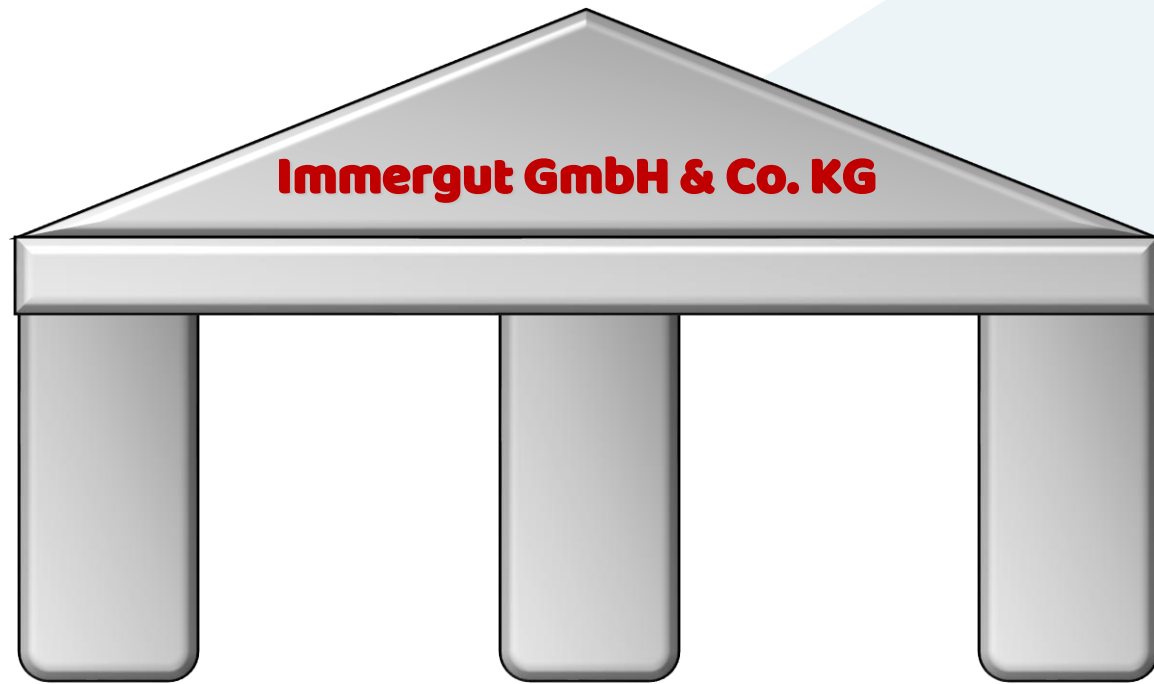
**Immergut,  
the No. 1 in the contract filling business for "liquid" products in Europe  
and internationally, as an innovative problem solver, who competently  
accompanies customers as a partner in the long term, from the idea to the  
development to the introduction and throughout the product life cycle.**



## Our history



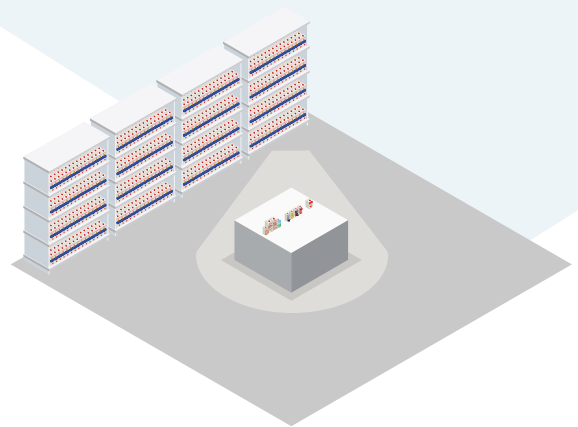
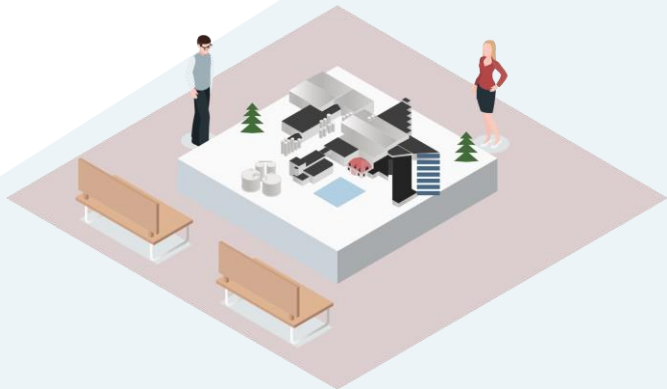
# Our customer categories



Marke /  
Brand 10%

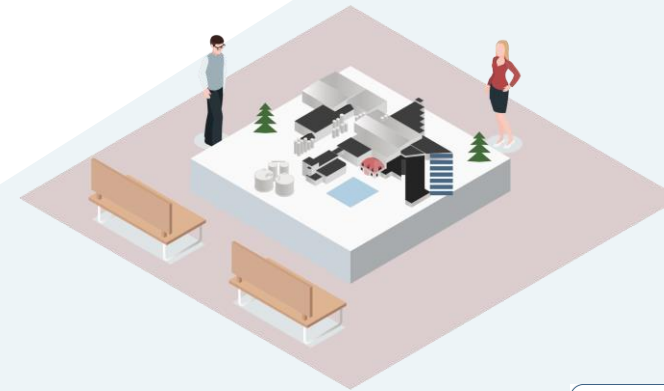
Eigenmarke /  
Private Label 5%

Kundenmarke /  
Co-Packing 85%



## Our quality guidelines and certifications

- **International Food Standard: IFS - Version 6 ; Higher Level**
- **ZNU – certified for "sustainable management" (September 2020)**
- **BIO - organic certification DE-ÖKO-003 EU**
- **Certification Markenqualität Hessen**
- **Certification GMO free products**
- **Certification RainforestAlliance Cocoa products**
- **Certification FairTrade Cocoa and Sugar**
- **Certification energy management according to ISO 50001:2018**
- **We have been working "process-oriented" since 2000 (Standard ISO 9001:2000)**
- **The HACCP-System has been implemented since 1998; Yearly Inspections by our Veterinary Surgeon**



DE-ÖKO-003

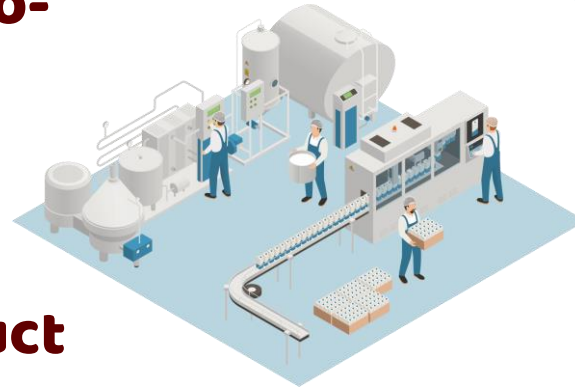
## Our core competence

**Flexible partner and problem solver  
for trade and industrial customers  
- National & International**

**Special competence centre  
for contract filling/co-  
packing**

**+**

**Specialist for soft  
packaging and product  
development**

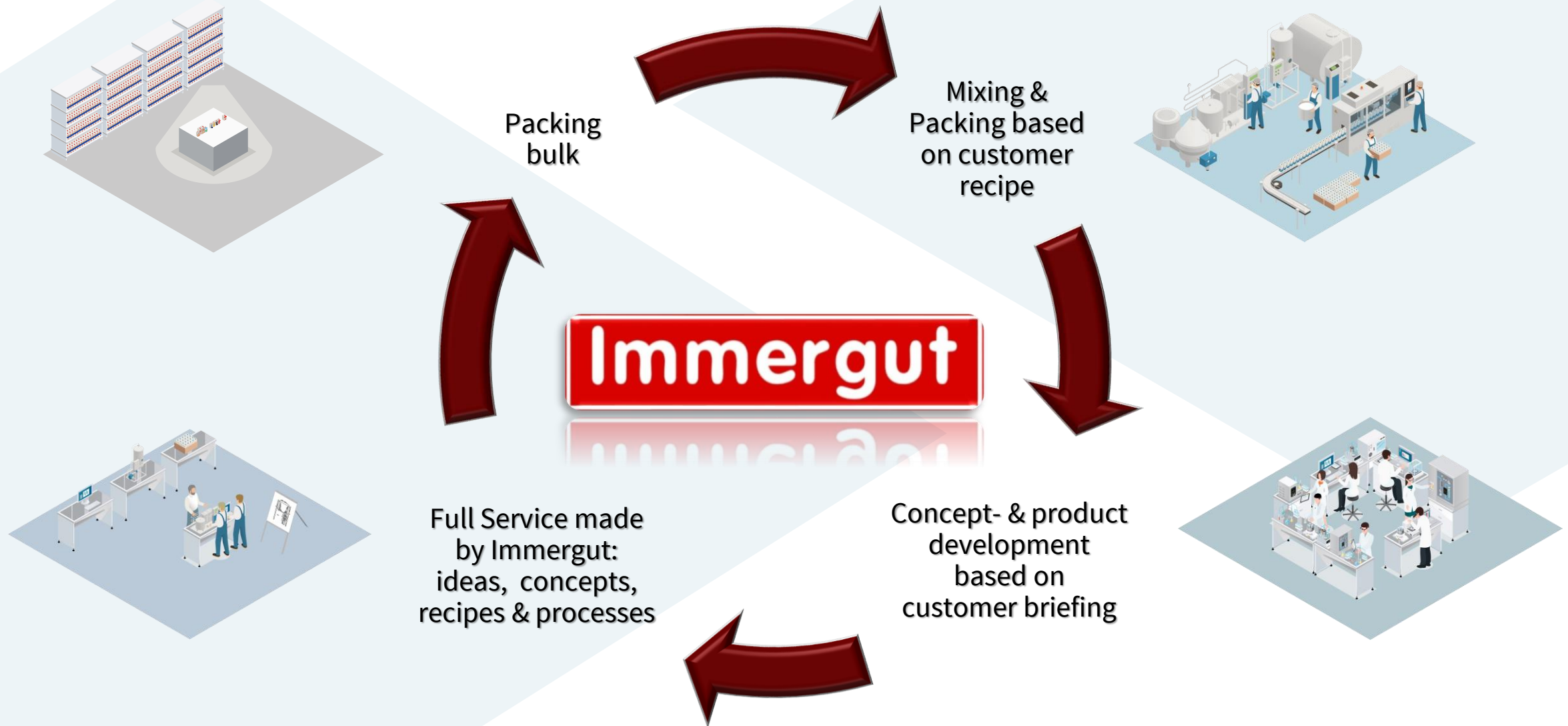


## Our strengths:

- **Great competence in the range of complex special products**
- **Fast development cycles**
- **High flexibility in processing**
- **Motivated & dynamic team**

**Immergut**

# Our co-packing Service



**Immergut**



**Factory Schlüchtern**

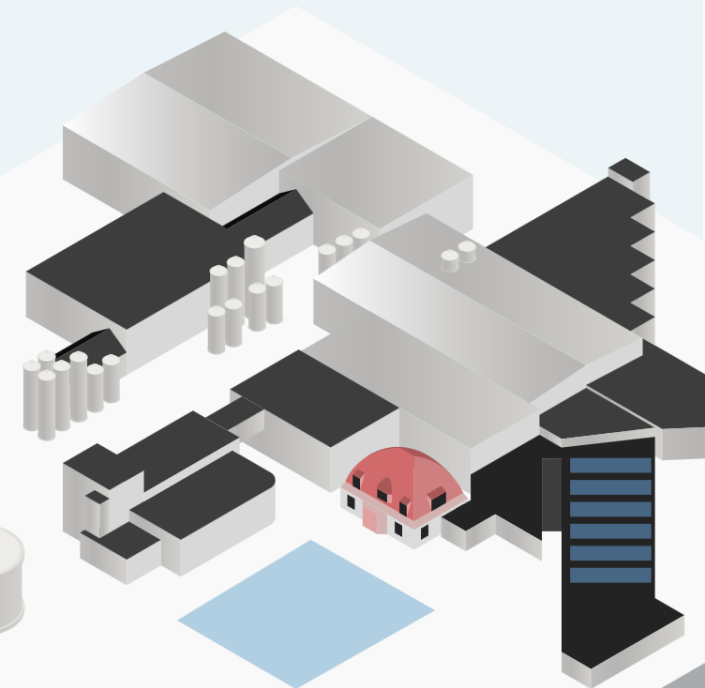
## About us...

- **170 happy employees** 😊
- **12 motivated trainees** 😊
  - Office and industrial clerk
  - Dairy technologists, Dairy laboratory assistants
  - Electricians , Mechanics and mechatronic engineers, Operators
- **75 million kilogram of delicious milk, best juices, various milkalternatives per year**
- **> 3.000 ingredients**
- **420 different articles with about 340 recipes**
- **85% Export share to the EU and worldwide**
- **200 million units / p.a.**



## Our Novelties & Innovations

- **2018**
  - Modernisation and extension mixing section
  - 2 fermentation tank and 4 raw material tanks
- **2019**
  - TetraPak Wedge 180ml Filling line
  - TetraPak Prisma-Edge 200ml/250ml Filling line
- **2020**
  - Digital Process Control
  - Restructuring of Palletizing (robots)
- **2021**
  - Digital Process Control
  - Restructuring of Palletizing (robots)



## Our filling lines – 33 possibilities

### 9x TetraPak

#### 3 x 200ml/250ml TetraPak EDGE

with straw or cap HeliCap  
multipack 3 or 6, shrinked

#### 1 x 200ml TetraPak Prisma Square

opening : telescope-straw

#### 1 x 200ml/250ml TetraPak Prisma Edge

opening : telescope-straw  
or screw cap DreamCap

#### 1 x 200ml TetraPak Wedge

opening : paper-straw

#### 2 x 330ml TetraPak Prisma Square

with screw cap DreamCap  
multipack 3, shrinked

#### 1 Liter / 500ml TetraPak EDGE

opening : screw cap LightCap

### 1x SIG CF7

#### Combibloc

150ml, 200ml, 250ml, 300ml,  
330ml und 350ml

opening: perforation or straw

#### Combifit

200ml, 250ml, 300ml, 330ml und 350ml

opening: screw cap or straw

### 1x Pouch

**Cheerpack** CP 70/90/110/200/250/330/500 ml

**Doypack** DP 40/70/90/110/150/200 ml

# Immergut

## Our packaging shapes



## Our product concepts

- Flavoured milk, yoghurt drinks & ice coffee
- Soft drinks (ice tea, coconut water, water and juices)
- Dessert and dessert-sauces / custards
- Cooking Cream, Whipped Cream, based on milk or plant fat
- Functional and vitamin drinks
- Sports- and protein drinks
- Dietetic drinks
- Enteral nutrition
- Meal Replacement Shakes & Smoothies
- Special products based on milk alternative raws (soy, oat, rice, quinoa, almond & more)
- Cows, sheeps & goats milk
- Drinks and supplementary feed for cats & dogs



**Immergut**

**We are always good!**

**Immergut**

**Immergut**

# Contact us....

## Sales & Administration

### **Immergut GmbH & Co. KG**

Bahnhofstraße 22

D-36381 Schlüchtern

Phone +49 (0) 66 61 / 155-0

Fax +49 (0) 66 61 / 155-190

[info@immergut.de](mailto:info@immergut.de)

[www.immergut.de](http://www.immergut.de)

## Head office of company

### **Immergut GmbH & Co. KG**

Kampstraße 8

D-27404 Elsdorf

